

CERTIFICATE OF LOCATION OF GOVERNMENT CORNER

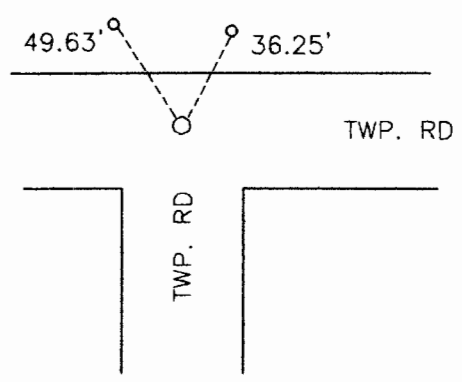
Northeast _____ Corner of Section 1 , Township 108 , Range 40 , 5th P.M.

STATE OF MINNESOTA, County of Murray

At the corner location shown on the sketch:

- On Nov. 17, 1998 found a 5/8" iron inside field tile filled with concrete
DATE
- left monument as found, lowered monument, removed monument (explain)
- On Nov. 17, 1998 placed a 1" iron pipe with seal above monument
DATE

SKETCH OF REFERENCE TIES



Top center of rural water valve 49.63' NW
 Top center of rural water valve 36.25' NE

Statement of evidence relative to this corner location is on back of page.

I hereby certify that this document and the data contained herein was prepared by me or under my direct supervision.

Lyle E. Mosen 11-18-98
SIGNATURE DATE

Registration No. 11943

- Land Surveyor, Professional Engineer
- County Surveyor, County Engineer

OFFICE OF THE COUNTY RECORDER
County of _____

I hereby certify that this document was filed in the Co. Recorders office at _____ .M on the _____ day of _____ A.D. 19 _____

County Recorder _____
 By _____, Deputy

DOCUMENT NO. _____

Statement of Evidence

On May 13, 1998, J.W. Woolstercraft placed a stone at the corner.

On November 17, 1998, Moseng Land Surveying, found 5/8" iron inside field tile filled with concrete. We placed a 1" iron pipe with seal number 11943 over concrete monument.